



Kite Tales

Volume 50 Number 7

March 2015

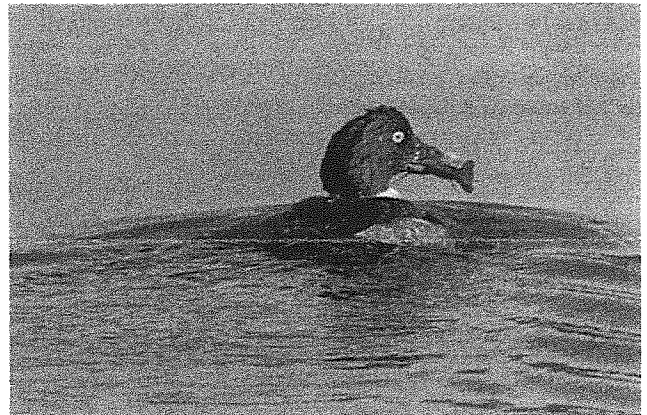
**RROS General Meeting,
March 11, 2015 7p.m.,
First United Methodist Church
1551 Montgomery Ave., Santa
Rosa, CA**

Wednesday, March 11, 2015-

Dr. Andrea Goodnight, the veterinarian in charge of the Oakland Zoo's California **Condor Recovery Project**, will tell us about this new care facility. She will discuss the reasons another care facility was needed and the threats that condors face in the wild. And she will describe efforts to decrease lead exposure which has caused so much harm to wildlife - especially to condors.

Save the Date: Wednesday, April 8, 2015- **Nick Geist**, Professor of Biology at Sonoma State University, will discuss **bird evolution** and the new information that is emerging in this field.

Directions to new monthly meeting: From Hwy 101, take the "Downtown" exit. Head east on 3rd St., through downtown, until it becomes Montgomery, after crossing Brookwood. Continue east on Montgomery, past Memorial Hospital.



***Happy Common Goldeneye
Spring Lake, by Tom Reynolds***

The meeting hall and parking lot is directly opposite Macklyn Ave, on Montgomery.

Dinner Before the monthly meeting: This month, join us at **5:30pm** at **Mary's Pizza**, at 535 Summerfield Rd, Santa Rosa, across from Howarth Park. From 101, take Hwy 12 east to Hoen Ave exit. Continue east on Hoen, to Summerfield, then north on Summerfield to the restaurant. **(This month, there will be a discussion about a new location for the pre-dinner meeting).**

FIELD TRIPS – March 2015, and beyond:

March 11, 2015, Wednesday: San Pablo Bay shore sites. Restoration of key habitat along Sonoma County's San Pablo Bay coastline is underway. We have permission from the Sonoma Land Trust to survey their new wetland behind the dike off Reclamation Rd. Leader(s) TBA. There are large winter concentrations of waterfowl (including perhaps Barrow's Goldeneye), shorebirds, and raptors (maybe a Rough-legged Hawk or Short-eared Owl) to be pursued, plus flocks of sparrows (maybe Clay-colored) and other species of plowed fields (pipits, Horned Larks) and hedgerows (shrikes). We will meet at 8 AM at the Port of Sonoma Marina parking lot, to check the mouth of the Petaluma River, before heading east to Reclamation Road, the Sonoma River Bridge, and Hudeman Slough/Skaggs Island. Finish by 3 PM. Expect a fair bit of walking. Bring your lunch, dress for the weather. Heavy rain cancels.

March 28, Saturday: Owl Prowl! Join Gene Hunn (enhunn323@comcast.net, 707-981-7301) in an effort to hear, and maybe see, some owls (no guarantees). The plan is to meet in Bodega Town at the junction of Salmon Creek Road and the Sebastopol Bodega Highway at 4 AM. The crack of dawn is about 5:30 AM (PDT), which gives us about two hours for nocturnal owling. We will work our way up Salmon Creek Rd. listening for Spotted, Northern Saw-whet, and Northern Pygmy-Owls. Warning: it may be necessary to "talk to the owls" vocally or by recording, though we will minimize such noise. As the sun rises we will explore the Bordessa Ranch west of Valley Ford, looking for Barn, Great Horned, Burrowing, and Short-eared Owls, then adjourn for breakfast. Rain and/or high wind cancels.

April 11, 2015, Saturday: Bodega Bay. Meet at 8 a.m. the horse trailer pullout on the north end of Bodega Bay. Leader TBA. Mid-April is a great time to visit Bodega Bay. The wintering shorebirds are dressed up in their breeding plumage and are staging for their long trips to their breeding grounds. We will be searching for all the other birds as well. Bring: bins, scopes, field guides, sunscreen, water, hats, layers of clothes, lunch and snacks. Heavy rain cancels.

BULLETIN: PELAGIC TRIPS, FALL, 2015: Mark your calendars. We're pleased to announce that RROS will sponsor two pelagic trips to Bodega Canyon and Cordell Bank this fall. We have reserved the New Sea Angler for **Sunday, September 6th, and Sunday, October 25th**. The cost remains the very reasonable \$140.00 for members, and \$160.00 for non-members, with a one-year membership in RROS included, a \$20.00 value. After members have sufficient opportunity to reserve their spaces, both trips will be opened up to the general birding community. Information about reservation procedures will be coming in the next issue of Kite Tales. Plan to reserve your space soon.

RROS Gull ID Field Trip from Bodega Head to Jenner, 1/24/15, led by Gene Hunn.

We met (20+ strong) at 8:00 AM, then devoted a half-hour to a discussion of the intricacies of gull identification, reviewing the 16 species so far recorded in Sonoma County, with a focus on the ten species we were likely to see. Our first stop was Bodega Head where resident Western Gulls offered close studies. A few Glaucous-winged Gulls, adult and immature, cruised by as well as a couple of hybrid "Olympic Gulls" (Western x Glaucous-winged), from their zone of intergradations on the northern Washington coast. Common Murres, Ancient Murrelets, and a Rhinoceros Auklet were spotted at some distance, cousins of the gulls.

Our next stop was Salmon Creek beach. We scrambled down the bluff to get a closer look at the 300-odd gulls roosting on the beach and bathing in the river. Here we trained a dozen scopes on the birds at close range, hoping the kids and dogs wouldn't chase them away first. Adult Western and Glaucous-winged on the large end of the spectrum, delicate Mew Gulls at the opposite extreme, lots of mid-range California Gulls exhibiting a range of leg color from yellow to gray-green, plus a substantial number of Herring Gulls, with their distinctive pearl-gray mantles and "staring pale" eyes. We studied a couple of birds judged likely to be Herring x Glaucous-winged hybrids from the Alaskan coast south of Anchorage, rather like large Thayer's Gull in coloration. We moved south to get better lighting on a group of 50 gulls bathing in the river when Hunn spotted a small pink-legged, pale eyed gull with a very small bill and round crown with dark gray primary tips. He thought it likely was an adult female Kumlien's Iceland Gull based on the overall size but especially bill and head proportions, plus mantle and primary coloration and eye color. The bird was very active and difficult to pick out in the crowd of milling, preening, and bathing gulls, so no definitive consensus could be reached, nor photographs to confirm or disconfirm Hunn's opinion. So it goes.

We then repaired to Jenner for lunch (in the warm sun), checked the few hundred gulls loafing near the seals on the beach at the mouth of the Russian River below the SR 1 overlook. Best find here were a half-dozen Heermann's Gulls, including one high plumaged adult, lingering late before returning to nest in Baja California. We headed back south with stops en route at Wright's Beach. Here a Gray Whale put on a show, breaching ¼ mile offshore. We closed out the trip at Duncan's Landing at peak high tide where the massive Pacific swells crashing the rocks generated Old Faithful quality plumes of spray.

Observations: Jan. 21, 2015-Feb. 20, 2015 Compiled by David A. Hofmann

Species	Date/s	Location	County #	Observer/s
Grtr White-fronted Goose	1/24/15	Hudeman's Slough	SON 3	DoS
Grtr White-fronted Goose	1/25/15	Bird Walk Regional Pk	SON 3	DeH
Grtr White-fronted Goose	2/07/15	N end Smith Road	SON 1	DaS
Snow Goose	1/24/15	Ramal Road	SON 21	DoS, mob
Snow Goose	1/25/15	Doran Regional Park	SON 9	DeF, Br&OrO, DeH
Snow Goose	1/26/15	Laguna de Santa Rosa	SON 15	ScC
Snow Goose	2/18/15	Petaluma	SON 100	DaB fly over
Ross' Goose	1/25/15	Ellis Creek Ponds	SON 1	LeG
Ross' Goose	1/25/15	Doran Regional Park	SON 5	DeF, Br&OrO, DeH
Cackling Goose	2/07/15	n. end Smith Road	SON 2	DaS
Cackling Goose	2/13/15	Petaluma	SON 125	AlH fly over
Cackling Goose	2/14/15	Petaluma	SON 170+	AlW fly over
Tundra Swan	1/22/15	Howarth Pk/Lake Ralphine	SON 1	DeD
Tundra Swan	1/24/15	Bodega Hwy/Carmody Rd	SON 6	EuH, mob
Tundra Swan	1/25/15	Doran Regional Park	SON 3	DeF, Br&OrO, DeH
Blue-winged Teal	2/13/15	Doran Regional Park	SON 2 m	LaS
Eurasian Wigeon	1/25-2/13/15	Doran Regional Park	SON 1-2m	DeH, mob
Eurasian Wigeon	2/01-20/15	Shollenberger Park	SON 2 m	DoS, RoS
Redhead	1/19/15	Old Quarry Pond	SON 1 f	Br&OrO
Hooded Merganser	1/23/15	Russian R./Austin Crk	SON 2	LiP
Hooded Merganser	1/22-24/15	Hood Mtn/Pythian Rd	SON 18	DoS, mob
Hooded Merganser	1/26/15	Laguna de Santa Rosa	SON 2	ScC
Hooded Merganser	2/01-20/15	Shollenberger Park	SON 2	DoS, RoS
Hooded Merganser	2/10/15	Sonoma Mtn Rd pond	SON 1 m	BrO
Red-necked Grebe	1/24/15	Bodega Head State Pk	SON 2	EuH, mob
Ferruginous Hawk	1/30/15	Duhig Rd. x Hudeman	SON 2	DaE, mob
Ferruginous Hawk	2/15/15	Tolay Lake Reg. Park	SON 1	LaS
Merlin	2/10/15	Bird Walk Reg. Park	SON 1 f	JaS

Merlin	2/20/15	Shollenberger Park	SON	1	RoS
Snowy Plover	2/01/15	Doran Regional Park	SON	24	LiH, YAM
Ancient Murrelet	1/24/15	Bodega Head State Pk	SON	2	RAR, mob
Ancient Murrelet	1/28/15	Bodega Head State Pk	SON	5	BDP, MaB, DAH
Burrowing Owl	1/20/15	Santa Rosa Old Airbase	SON	2	Br&OrO
White-throated Swift	1/21-26/15	R. L. Stevenson St. Pk	SON	4	DaN, EuH
White-throated Swift	1/24/15	Mt. Hood Regional Pk	SON	3	DoS
Rufous Hummingbird	1/21/15	Mt. Hood Regional Pk	SON	1	DoS
Allen's Hummingbird	1/26/15	Sebastopol yard	SON	1 m	ScC
Lewis' Woodpecker	2/04/15	Arnold Dr. x Leveroni	SON	1	RiL
Lewis' Woodpecker	2/15/15	Helen Putnam Reg. Pk	SON	1	AIW
Red-naped Sapsucker	1/30-2/02/15	Farmer's Ln x S.R. Crk	SON	1 m	SeM,AmT, MBal
Williamson's Sapsucker	1/29-2/16/15	Santa Rosa/Flamingo H	SON	1 f	SeM,mob 2d cty rec
Clark's Nutcracker	1/21/15	Mt. Hood Regional Pk	SON	1	DoS
Canyon Wren	1/21-26/15	R. L. Stevenson St. Pk	SON	3	DaN, EuH
Townsend's Solitaire	1/21-2/15/15	Mt. Hood Regional Pk	SON	2	DoS, EuH, EmS,
Townsend's Solitaire	1/21-26/15	R. L. Stevenson St. Pk	SON	40	DaN, EuH
Townsend's Solitaire	1/31/15	Occidental yard	SON	1	MiH
Nashville Warbler	1/24/15	Diekmann's Store	SON	1	RAR, mob
Lucy's Warbler	1/22-2/13/15	Diekmann's Store	SON	1	DeF, mob
Blck-thrted Gray Warbler	1/25/15	Diekmann's Store	SON	1	DeF
Summer Tanager	1/21/15	Mt. Hood Regional Pk	SON	1 f	DoS
Chipping Sparrow	1/21/15	Mt. Hood Regional Pk	SON	1	DoS
Cassin's Finch	1/21-30/15	Mt. Hood Regional Pk	SON	4	DoS, EuH

Observers for this period: Mario Balitbit, Dave Barry, Margaret Barson, Scott Carey, Debbie Drechsler, Daniel Edelstein, Dea Freid, Leslie Graeber, Mike Heffernon, Denise Herzberg, Al Hesla, David A. Hofmann, Eugene Hunn, Rick LeBaudour, Sean McAllister, Dan Nelson, Brook&Orion O'Connor, Benjamin D. Parmeter, Linda Petruvias, Ruth Ann Rudesill, Doug Shaw, Dave Shuford, Jackie Sones, Lang Stevenson, Ron Storey, Emilie Strauss, Amber Transou, Alan Wight
The compiler apologizes and takes full responsibility for omissions or errors regarding this list.

Pishing with Parmeter~ Mike is on vacation this month. We will look forward to another installment of his fine column in the next issue. **Ed~**

NEW MEMBER: RROS welcomes **Nolan Bollinger**, of Sebastopol, as a new member. Nolan will be one of our up-and-coming young birders.



**Black Rail, Ellis Creek Marsh,
by Len Nelson**



**Williamson's Sapsucker, Flamingo
Hotel, by Rick LeBaudour**



Wild Geese, by Ken Wilson

Wild Geese

You do not have to be good.
You do not have to walk on your knees
for a hundred miles through the desert, repenting.
You only have to let the soft animal of your body love what it loves.
Tell me about despair, yours, and I will tell you mine.
Meanwhile the world goes on.
Meanwhile the sun and the clear pebbles of the rain
are moving across the landscapes,
over the prairies and the deep trees,
the mountains and the rivers.
Meanwhile the wild geese, high in the clean blue air,
are heading home again.
Whoever you are, no matter how lonely,
the world offers itself to your imagination,
calls to you like the wild geese, harsh and exciting-
over and over announcing your place
in the family of things.

Mary Oliver

Redwood Region Ornithological Society (www.rros.org) was organized in 1962 "to encourage the study and conservation of birds, other wildlife, and their natural habitat." Meetings are held the second Wednesday of each month September through May, at 7:00 pm at the First United Methodist Church, 1515 Montgomery Ave, Santa Rosa California. Dues are \$20 per individual or family, and \$5 per student for a one-year membership. Send dues to RROS Treas. Don Howard, 979 Hogwarts Circle, Petaluma CA 94954.

RROS Officers

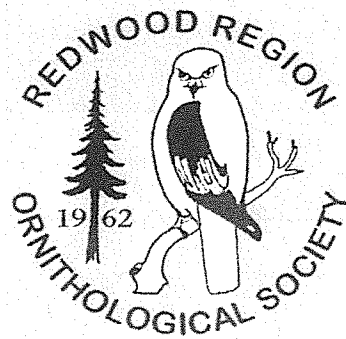
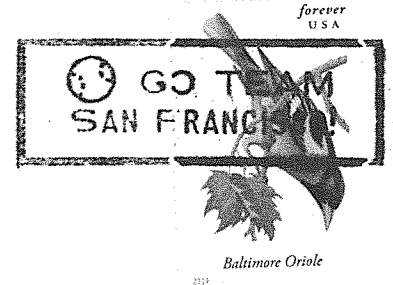
President - Bill Doyle	1966 Belmont Ct., Santa Rosa, 95404	shortbill@comcast.net	483-8773
Vice Pres - Terry Haag	1340 Big Plum Dr., Sebastopol 95472	teresitahaag@comcast.net	823-8527
Secretary - Rita Bevins	237 Deanna Pl. Windsor, Ca. 95492	ritanbill@comcast.net	484-3704
Treasurer - Don Howard	979 Hogwarts Circle, Petaluma 94954	binkybunji2@comcast.net	637-0868

Committee Chairs

Field Trips - Gene Hunn,	204 Fair Ave., Petaluma, 94954	enhunn323@comcast.net	981-7301
Observations- David Hofmann	2021 Pioneer Wy #47 Santa Rosa 95403	nnamfoh@comcast.net	546-0325
Christmas Count - Bill Doyle	1966 Belmont Ct., SRosa, 95404	shortbill@comcast.net	483-8773
Kite Tales - - Bill Doyle	1966 Belmont Ct., SRosa, 95404	shortbill@comcast.net	483-8773

Kite Tales Deadlines: Submit observations to David Hofmann, all other items to Bill Doyle by the 20th of the month.

KITE TALES
979 Hogwarts Circle
Petaluma CA 9954



Benjamin D. Parmeter, MD
2500 Emerson St
Napa, CA 94558

